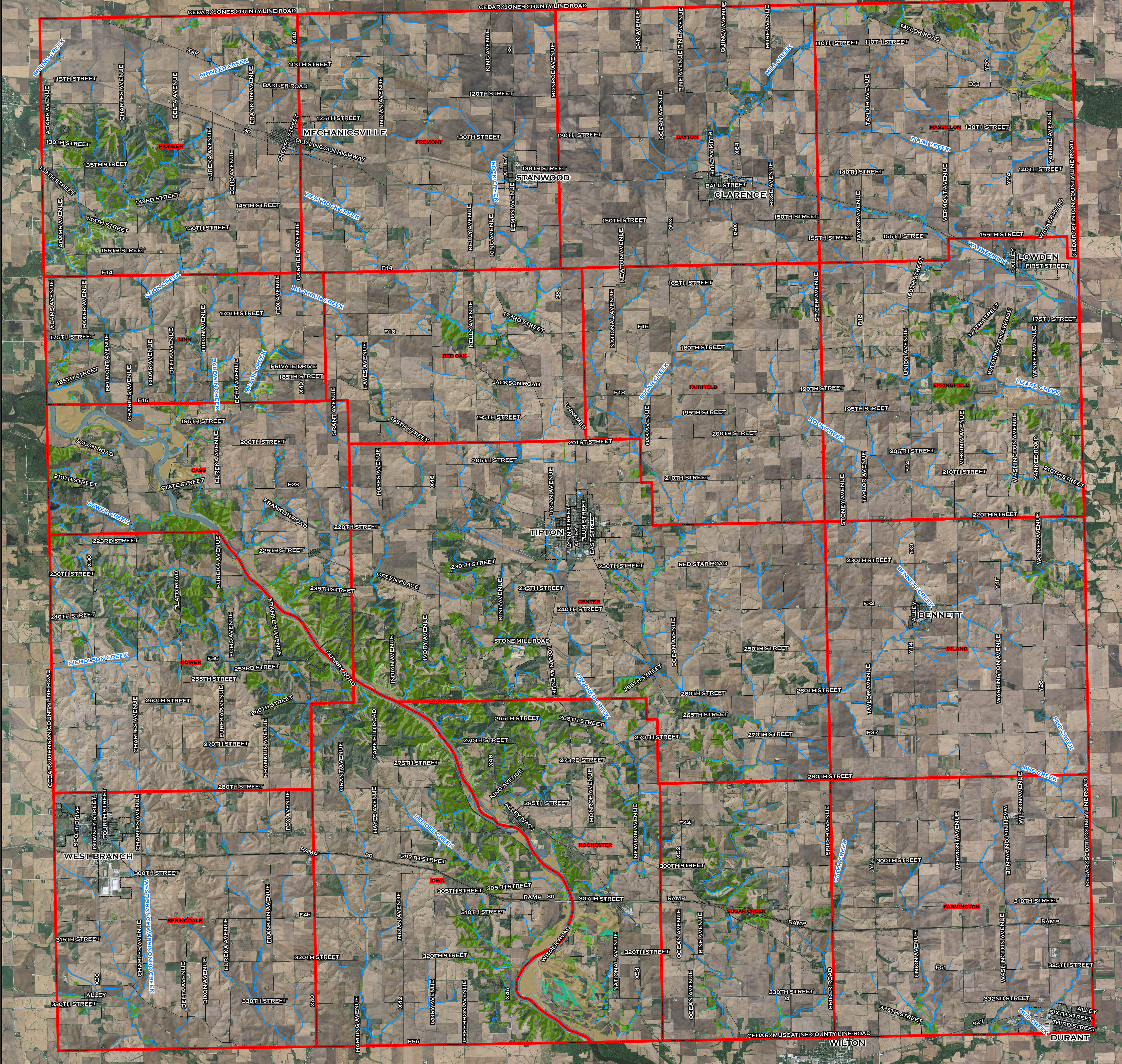
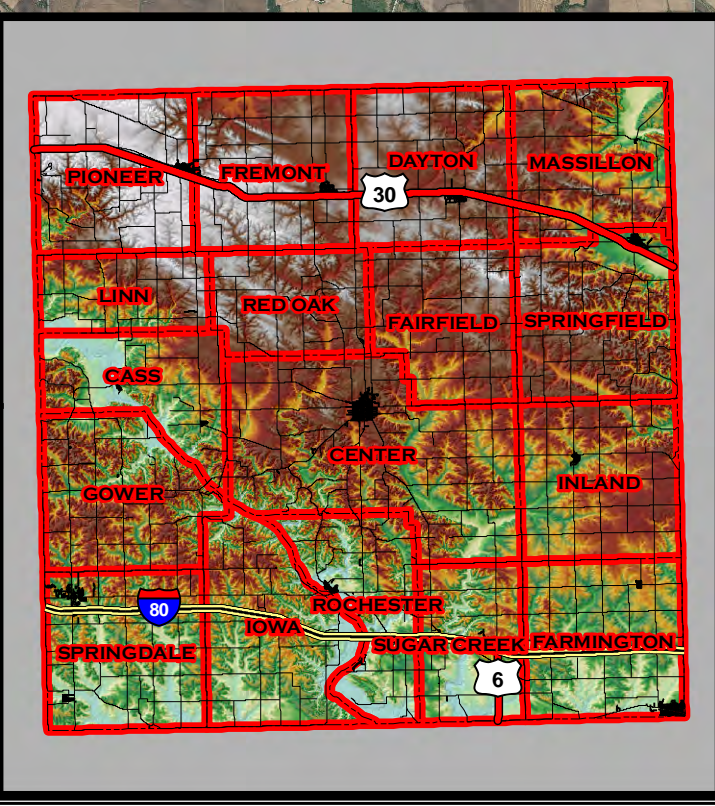


FORESTS & WOODLANDS OF CEDAR COUNTY



FOREST TYPES

	1) MODERATELY WET
	2) WET, HYDRIC
	3) WELL DRAINED MOIST LOAMY, 18-35% CLAY
	5) WELL DRAINED DRY LOAMY, 8-18% CLAY, SAND/ GRAVEL
	6) MODERATELY DEEP, SHALE/ LIMESTONE/ SANDSTONE
	7) DEEP SANDY
	10) SHALLOW OR MISCELLANEOUS
	NO RATING



1 INCH EQUALS 1 MILES
 0 0.5 1 2 MILES

GIS METADATA OVERVIEW
 GRID COORDINATE SYSTEM: IOWA STATE PLANE
 SPCS ZONE IDENTIFIER: IOWA, SOUTH
 DATUM: NAD83
 UNITS: U.S. SURVEY FEET

MAP AND ANALYSIS CONDUCTED BY:
GIS DEPARTMENT
CEDAR COUNTY
400 CEDAR ST
TIPTON, IA 52772
(563) 886-2236
GIS@CEDARCOUNTY.ORG

GEOGRAPHIC CHARACTERISTICS OF CEDAR COUNTY FORESTS & WOODLANDS

PATCH STATISTICS		PERIMETER-AREA RATIO		FOREST TYPE	
ACRES (AC)	COUNT:909	MINIMUM:0.005	MAXIMUM:0.234	CONSERVATION TREE SHRUB GROUP	
MINIMUM:0.198433	MEAN:0.048671	MINIMUM:1.035	MAXIMUM:7.981	FROM NRCS IOWA WOODLAND INDEX	
MAXIMUM:966.540897	STANDARD DEVIATION:0.027033	MEAN:2.110411	STANDARD DEVIATION:0.941045	(1) MODERATELY WET= 1,729.48 AC	
SUM:25787.111686		MINIMUM:1.234	MAXIMUM:1.628	(2) WET HYDRIC= 1,628.09 AC	
MEAN:28.36866		MEAN:1.375691	STANDARD DEVIATION:0.061373	(3) WELL DRAINED MOIST LOAMY= 16,400.10 AC	
STANDARD DEVIATION:82.594756		MINIMUM:0	MAXIMUM:2433.8969	(5) WELL DRAINED DRY LOAMY= 274.21 AC	
AREA (SQ-M)	COUNT:909	MINIMUM:0	MAXIMUM:117.922822	(6) MODERATELY DEEP, SHALE/ LIMESTONE/ SANDSTONE= 121.78 AC	
MINIMUM:907.081022	MEAN:1.035	MINIMUM:0	MAXIMUM:2433.8969	(7) DEEP SANDY= 4,597.32 AC	
MAXIMUM:3911467.88159	MEAN:1.375691	MINIMUM:0	MAXIMUM:219.530796	(10) SHALLOW OR MISCELLANEOUS= 1,156.92 AC	
SUM:104357155.970797	STANDARD DEVIATION:0.061373	MEAN:117.922822	STANDARD DEVIATION:219.530796	* NO RATING= 75.27 AC	
MEAN:11480.432003		NEAREST NEIGHBOR DISTANCE (M)			
STANDARD DEVIATION:334250.456317		COUNT:909			
PERIMETER (M)	COUNT:909	MINIMUM:0	MAXIMUM:2433.8969		
MINIMUM:129.171845	MEAN:1.035	MINIMUM:0	MAXIMUM:2433.8969		
MAXIMUM:59953.034772	MEAN:1.375691	MINIMUM:0	MAXIMUM:2433.8969		
SUM:2057971.696431	STANDARD DEVIATION:0.061373	MINIMUM:0	MAXIMUM:2433.8969		
MEAN:11480.432003		MEAN:117.922822	STANDARD DEVIATION:219.530796		
STANDARD DEVIATION:334250.456317		NEAREST NEIGHBOR DISTANCE (M)			
		COUNT:909			
		MINIMUM:0	MAXIMUM:2433.8969		
		MINIMUM:0	MAXIMUM:2433.8969		
		MEAN:117.922822	STANDARD DEVIATION:219.530796		
		NEAREST NEIGHBOR DISTANCE (M)			
		COUNT:909			
		MINIMUM:0	MAXIMUM:2433.8969		
		MINIMUM:0	MAXIMUM:2433.8969		
		MEAN:117.922822	STANDARD DEVIATION:219.530796		

Tree Groups

Conservation Tree Shrub Group

- 1) MODERATELY WET
- 2) WET HYDRIC
- 3) WELL DRAINED MOIST LOAMY
- 5) WELL DRAINED DRY LOAMY
- 6) MODERATELY DEEP, SHALE/ LIMESTONE/ SANDSTONE
- 7) DEEP SANDY
- 10) SHALLOW OR MISCELLANEOUS

* FOREST DATASET WAS CREATED BY CEDAR COUNTY GIS DEPARTMENT
 * FORESTS WERE MAPPED FROM 2010 COLOR INFRARED AERIAL IMAGE
 * GEOGRAPHIC CHARACTERISTICS DERIVED FROM V-LATE 11 AND GENERAL ARCGIS PROCESSING TASKS